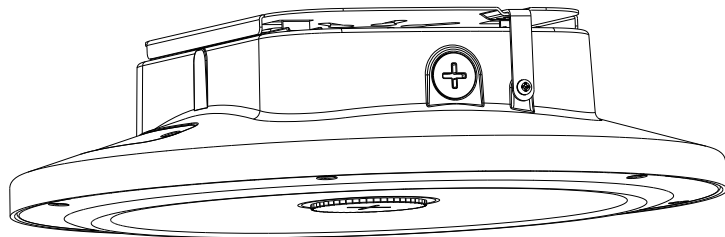


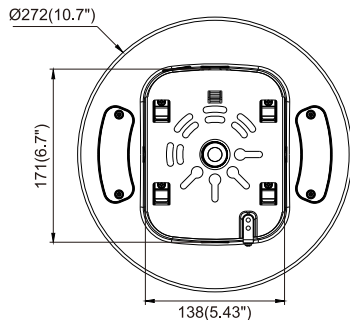
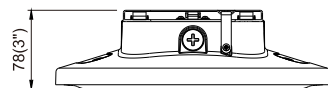
LED Garage Light

Installation Instructions

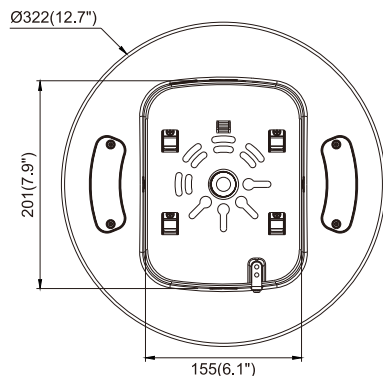
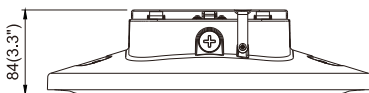


Physical Dimensions(Unit: mm/inch)

25W/40W/60W



80W/100W

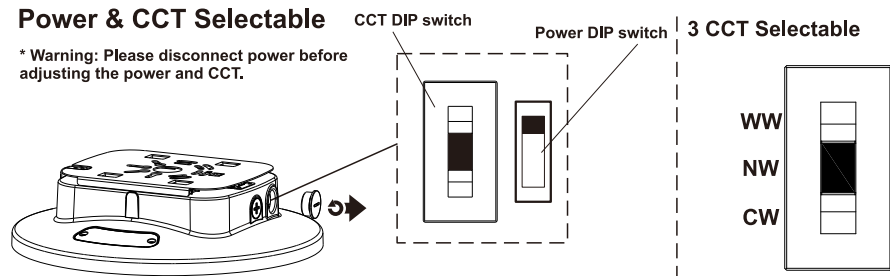


Product Specifications	25W	40W	60W	80W	100W
Input Voltage	120-277Vac / 120-347Vac / 100-277Vac / 100-240Vac / 220-240Vac (Subject to the input voltage on nameplate)				
Power Frequency	50 / 60 Hz				
Outlook Dimensions	Ø272x78mm(Ø10.7"x3")		Ø322x84mm(Ø12.7"x3.3")		
Net Weight(±6%)	2.1kg(4.63Lbs)		2.6kg(5.73Lbs)		
Working Temperature	-30°C to +50°C(-22°F to +122°F)				-30°C to +45°C (-22°F to +113°F)
Storing Temperature	-40°C to +70°C(-40°F to +158°F)				

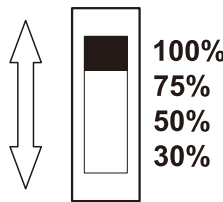
* Please subject to actual product for accurate weight.

Power & CCT Selectable

* Warning: Please disconnect power before adjusting the power and CCT.



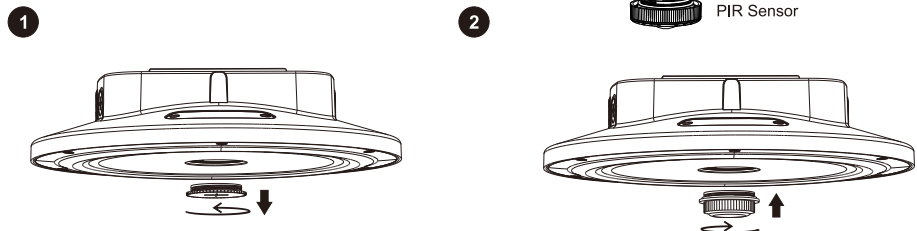
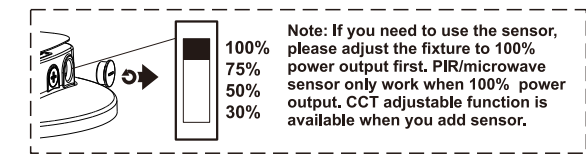
4 Power Selectable



* The tolerance for power is ±10%

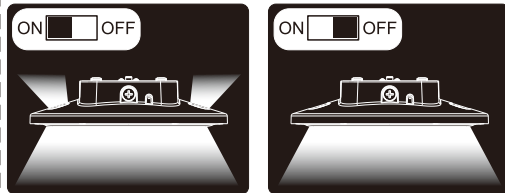
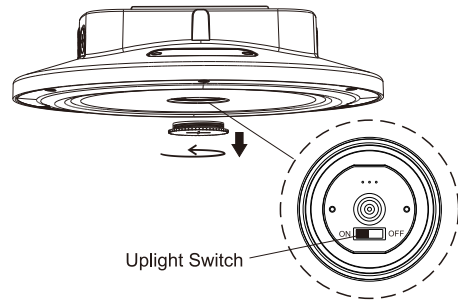
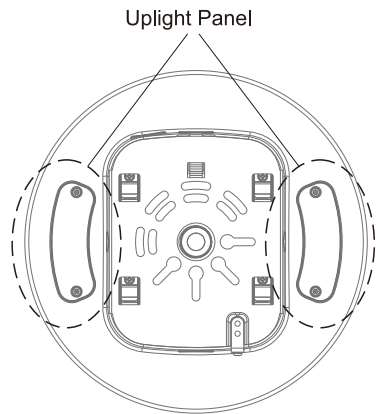
Power	100%	75%	50%	30%
25W	25W	19W	13W	7.5W
40W	40W	30W	20W	12W
60W	60W	45W	30W	18W
80W	80W	60W	40W	24W
100W	100W	75W	50W	30W

Sensor Mounting



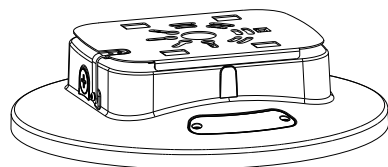
Uplight (Standard)

* Uplight is standard, if not needed, please turn off the switch.

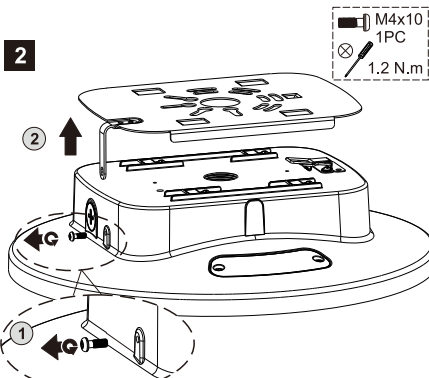


Ceiling Mounting

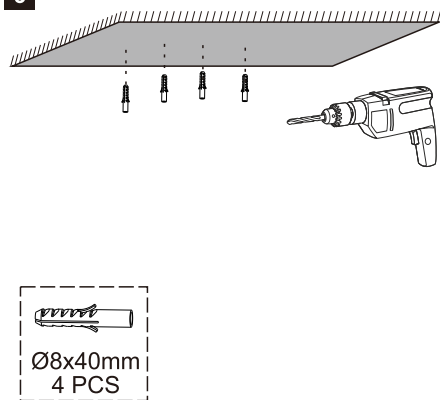
1



2

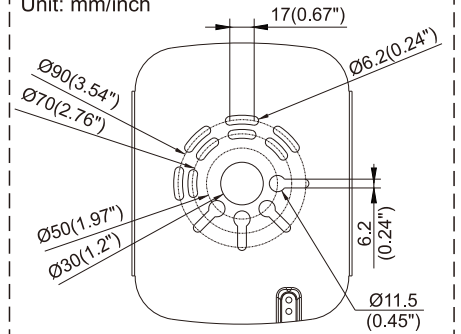


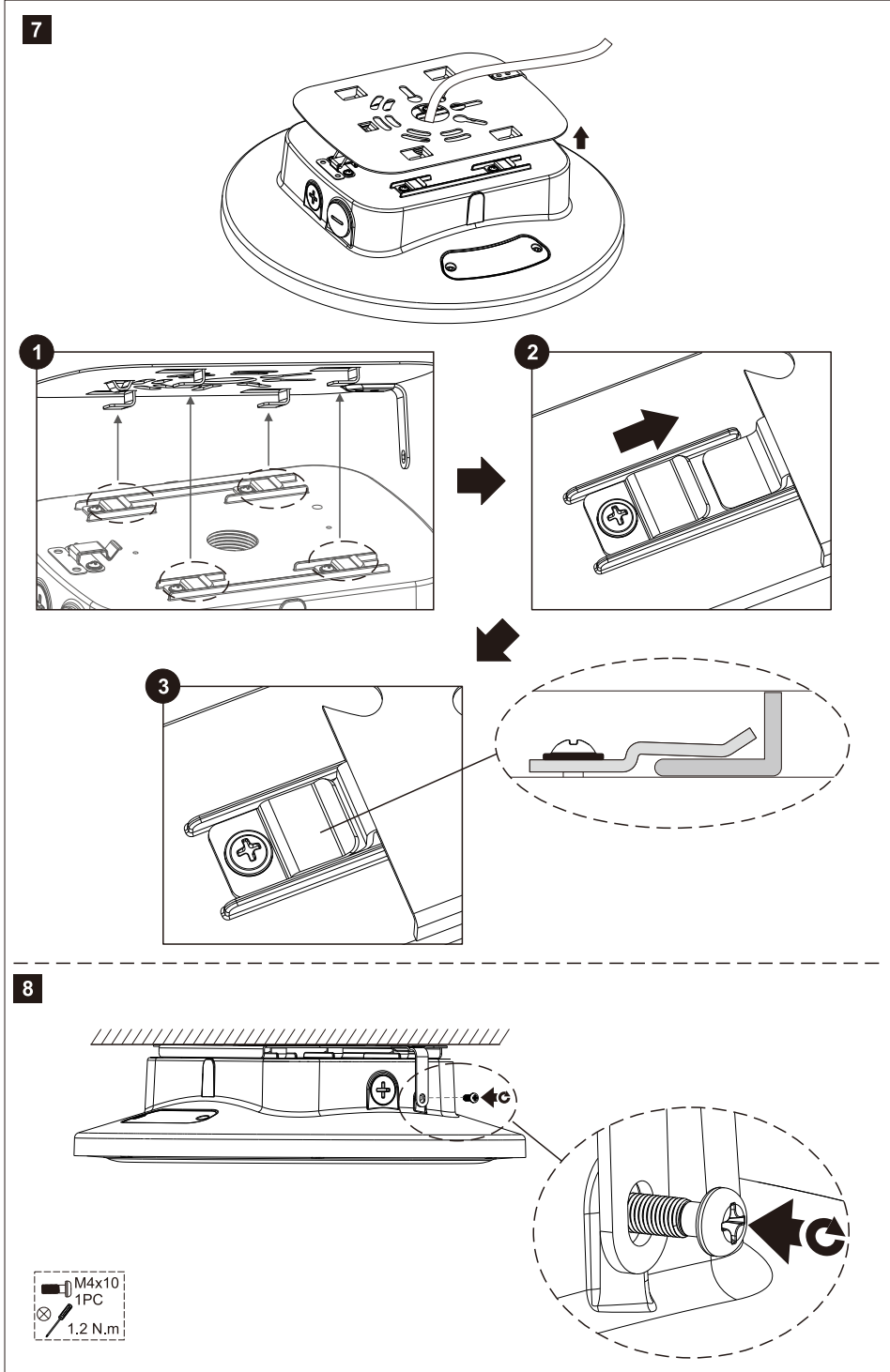
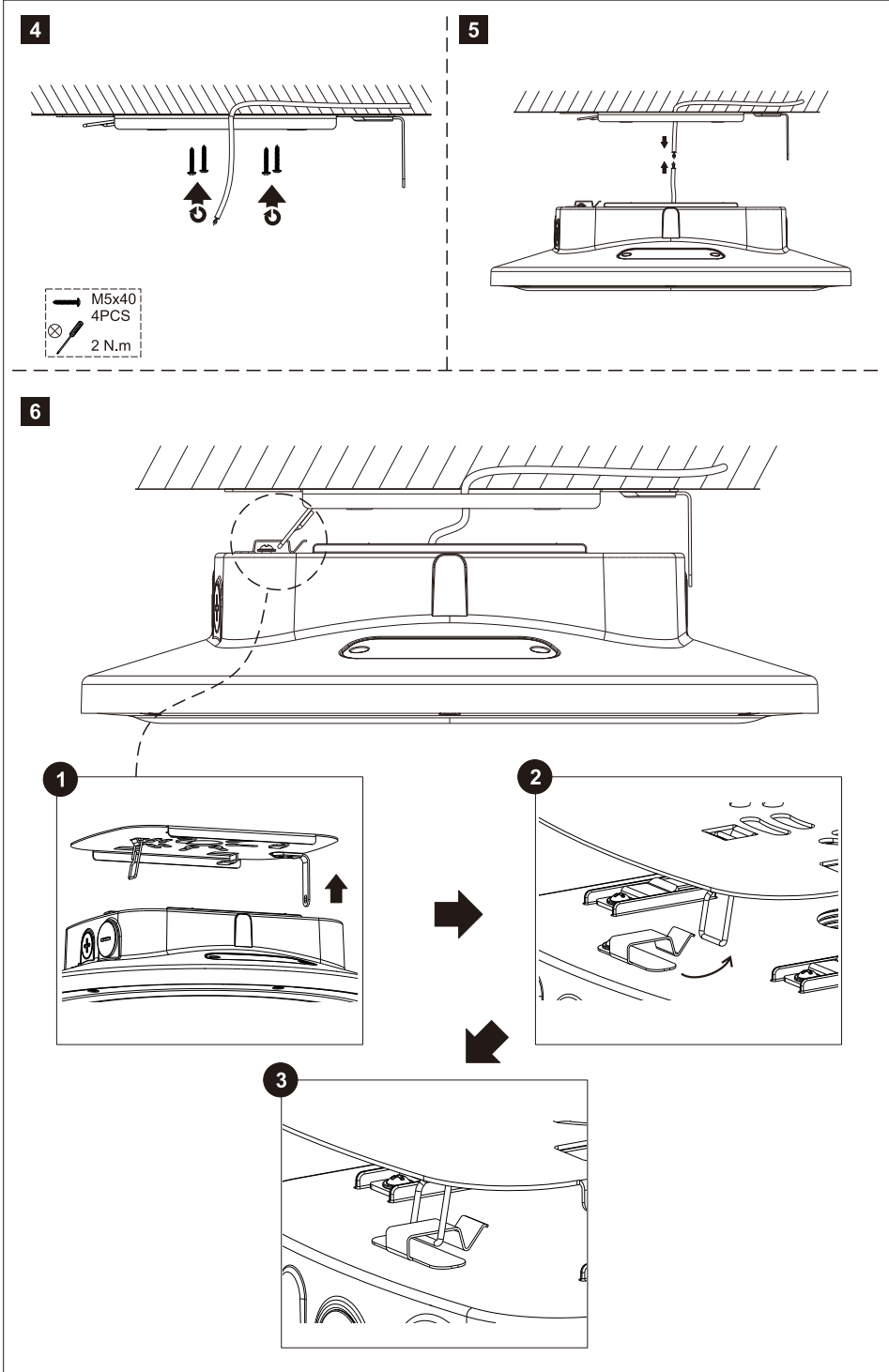
3



Drilling pattern:

Unit: mm/inch





3/4" NPT Conduit Mounting

